

KS2 SATS 2016

SATS 2016

THERE HAVE BEEN
SIGNIFICANT FOR THIS YEAR!

- Mental maths paper replaced by arithmetic
- No levels so no level 6 papers
- Changes to the curriculum and, therefore, changes to the tests' content

WHAT WILL BE ASSESSED?

ASSESSED BY TESTS *(marked externally)*

MATHS

Paper 1: arithmetic
Paper 2: reasoning
Paper 3: reasoning

** No Calculator Paper*

READING

One paper

SPaG

Spelling test

Grammar and
punctuation paper

CONTINUOUS ASSESSMENT

CONTINUOUS ASSESSMENT

SAMPLING - TESTS

WRITING

SPEAKING &
LISTENING

SCIENCE

MATHS 2016

MATHS (marked externally)

Paper 1: arithmetic Lasts for 30 minutes.

Paper 2: reasoning Lasts for 40 minutes.

Paper 3: reasoning Lasts for 40 minutes.

The tests have questions of 1 and 2 marks and children are given marks for working out if they finish the task, but get the answer incorrect.

READING 2016

PAPER 1

(marked externally)

One paper based on reading comprehension of three or four different, un-linked texts. The texts will get more difficult as you go through the paper.

NOTE: There is no longer a level 6 SATs paper

Lasts for 1 hour (no 'reading time' to start)

READING SKILLS ASSESSED

The most crucial aspects of reading at the end of Key Stage 2 are:-

- **Comprehension** - there is a greater emphasis on comprehension and a greater percentage of questions will test this skill
- **Vocabulary in context** - either linking synonyms in the text or through suggesting their own synonyms for given words
- **Predicting** - predicting what happens next by linking ideas to textual evidence
- **Fact and opinion** - questions will assess whether pupils can identify the difference between these
- **Comparison** - compare information, characters or events within a text
- **Summary** - these will usually be closed questions ordering events or selecting the most appropriate summary. May be open questions; answers will need to be deeply rooted in the text.

SPaG 2016

English - Spelling, Punctuation and Grammar

PAPER 1:

grammar,
punctuation and
vocabulary

Comprises 50 short-answer questions covering grammar, punctuation and vocabulary. The test will take 45 minutes

PAPER 2:

spelling

A spelling test with 20 words. The test will take approx. 15 minutes.

(marked externally)

English Grammar, Punctuation and Spelling

Content

- ❑ **Grammatical texts and word classes** - e.g. nouns, verbs, adjectives, prepositions, determiners, subject/object etc.
- ❑ **Functions of sentences** - e.g. statements, questions, commands, exclamations
- ❑ **Combining words, phrases and clauses** - e.g. sentences and clauses, relative clauses, noun phrases, subordinating clauses etc.
- ❑ **Verb forms, tense and consistency** - e.g. simple past / present, modal verbs, perfect form, tense consistency, active and passive
- ❑ **Punctuation** - full stops, commas, semi-colons, colons, apostrophe, parenthesis etc.
- ❑ **Vocabulary** - synonyms / antonyms, prefixes, suffixes, word families
- ❑ **Standard English and formality** - standard English, formal and informal vocabulary

WRITING 2016

Focus on the progress children make throughout the school year and across key stage 2, as opposed to a test-day snapshot of what they know.

- Teachers will assess children's writing composition. Children's results for English writing will be a judgement of their work across Year 6.
- Children's grammar, punctuation and spelling skills will be assessed as part of their writing, but their creativity and writing style will also be evaluated.
- Schools will moderate their judgements with other local schools and may be moderated by their Local Authorities too.

What is assessed in writing?



- Composition and Effect
- Text Organisation
- Sentence structure and Punctuation
- Spelling and Handwriting

Children are expected to be able to write using a range of different genres including:

- Newspaper report
- Biography
- Autobiography
- Diary Entry
- Narrative
- Formal letter
- Informal letter
- Report
- Recount
- Balanced argument
- Advert
- Instructions
- Playscript
- Poetry

SCIENCE 2016

SCIENCE SAMPLING - Every Two Years

- There are no formal science SATs .
- 'Science sampling' is being reintroduced.
- 9,500 children - five children from 1,500 schools - will be randomly selected to take a science test.
- Schools that are selected will be notified by mid-May, and are legally obliged to participate if chosen.

PAPER 1

PAPER 2

PAPER 3

25 minutes

Tests to be taken within a two-week period in June.
Results will be published at a national level; neither schools nor parents will be given their children's individual results, and they won't be used in league tables.

WHEN ARE THE TESTS?

All KS2 SATs will be held in the week beginning 9th May 2016.

Date	
Monday 9 th May	Reading paper
Tuesday 10 th May	Spelling, punctuation and grammar papers
Wednesday 11 th May	Maths paper 1 (arithmetic) and paper 2 (reasoning)
Thursday 12 th May	Maths paper 3 (reasoning)

SPECIAL EDUCATIONAL NEEDS

Some support can be given to children who have additional needs. Requests for **additional time** will be made by teachers using their knowledge of children and the children's individual needs.

Unless there are exceptional circumstances, no help can be given with the English tests

A teacher can help a child to **read** instructions and non-technical elements of questions on the maths test.

REPORTING RESULTS

- Children's progress, as well as their achievement, will be measured and reported on in school performance tables.
- Teacher assessments will be passed on to secondary schools so they can be used in planning for year 7 teaching.
- The papers are returned mid July.
- Written reports are given at the end of the summer term along with your child's results and the results for school.

SCALED SCORE

Until September 2014, children's progress was assessed through National Curriculum levels. **The government has now removed levels.**

From this year, children's attainment will be assessed in the following way:

- ❖ **Reading** - whether a child is working at the expected standard
- ❖ **Writing** - whether a child is working:
 - ❖ towards the expected standard;
 - ❖ at the expected standard;
 - ❖ at greater depth within the expected standard
- ❖ **Maths** - whether a child is working at the expected standard

SCALED SCORE

With the removal of levels, your child will be assessed against a scaled score.

A score of 100 means that a child is working at the expected standard.

There will be scores below 100 and above 100 but the government do not yet know where the scale will begin or end.

The scaled score will be reported you.

How are we preparing?

- Practising previous SATS papers
- Continuous assessment
- Booster classes
- Focused maths lessons
- Focused spelling lessons - weekly spelling tests
- Focused SPaG lessons
- Guided and independent reading
- Writing assessments - extended writing
- Home Learning
- Target setting
- Small group teaching

HELPING AT HOME

- Try not to put pressure on your child.
- Support with homework and targets that have been discussed at Parents Evening.
- Read regularly and discuss a variety of texts - not just 'listening' to your child read. USE READING EGGS.
- Short bursts of mental maths, times tables and problem solving etc. MY MATHS IS COMING!
- Use the previous test papers only if advised by school they are used in school as assessment and practise for the children. Using the same papers at home makes it difficult for us to prepare the children adequately.

WE RECOMMEND:-

Early nights and lots of sleep

Good attendance

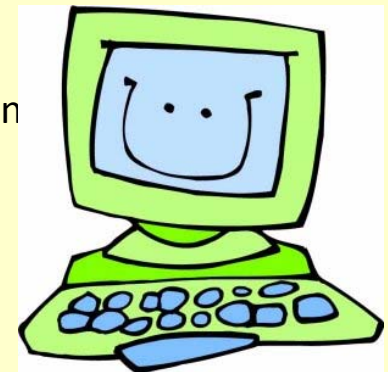
Good punctuality

A good breakfast

**LOTS OF PRAISE AND
ENCOURAGEMENT!**

USEFUL WEBSITES

- <http://www.bbc.co.uk/schools/revision/>
- This is an excellent site, providing revision help for KS2, KS3, KS 4 and KS5. This covers all subjects through activities and tests.
- http://www.icteachers.co.uk/children/children_sats.htm
- A wide range of KS2 SATs questions, from both past papers and their own team of teachers.
- <http://www.woodlands-junior.kent.sch.uk/revision/index.html>
- Revision pages at Woodlands Junior School. These revision pages support the work they do at Woodlands Junior School. They have been put together for their students to help them with their revision. Included are some sample questions taken from past Key Stage 2 SATs papers, as well as a whole host of interactive tests/quizzes.
- <http://www.compare4kids.co.uk/maths.php>
- This links to lots of other websites which have games and activities on specific subjects
- <http://www.emaths.co.uk/index.php/4-students/past-papers/ks2-sat-papers>
- Over 10 years of past SAT papers for you to use
- (Please do not use papers after 2007 as these will be used in school during revision)
- <http://www.parkfieldict.co.uk/sats/>
- English and Maths revision activities and games.



ANY QUESTIONS?

